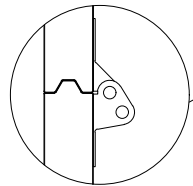
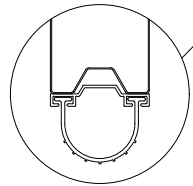


Joint Detail
Tongue and groove design



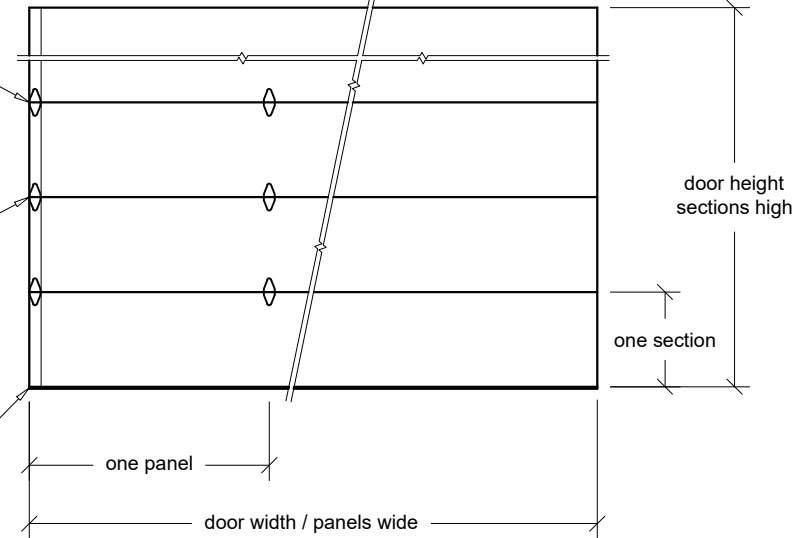
Hinge Detail
Graduated end hinges
≥ 16'-3" wide = double end hinges
minimum 14 gauge



Bottom Seal Detail
TPE astragal in
aluminum retainer

Interior Elevation

Exterior Elevation



Door Width	Panels Wide	Door Height	Sections High
08'-00" to 09'-05"	2	07'-00" to 08'-00"	4
09'-06" to 12'-11"	3	08'-03" to 10'-00"	5
13'-00" to 16'-05"	4	10'-03" to 12'-00"	6
16'-06" to 20'-02"	5	12'-03" to 14'-00"	7
20'-03" to 24'-02"	6	14'-03" to 16'-00"	8
24'-03" to 26'-02"	8	16'-03" to 18'-00"	9
26'-03" to 28'-02"	10	18'-03" to 20'-00"	10
Available in 1" width increments		Available in 3" height increments	

Contact C.H.I. for special sizing outside of listed pricebook charts

Flush Sandwich Door | 3286

Section Thickness: 2"
Section Heights: 18", 21", 24"

Panel Material: Hot dipped galvanized steel
26 gauge exterior / 27 gauge interior

Panel Profile: Wood grain textured, wood grain
flush exterior / Wood grain flush interior

End Stiles: 20 gauge white painted galvanized
steel, full height of section

Insulation: CFC free polystyrene bonded to skins
R-Value 10.29 / U-Value 0.097

Color: Polyester primer and top coat in C.H.I.;
White, Almond, Sandstone, Brown, Black, Gray,
RAL# powder-coating exterior / White, RAL#
powder-coating interior

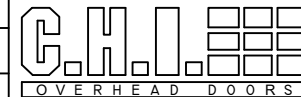
Logo printing available on exterior & interior

Glazing Options: 1"; Clear, Tinted, Tempered in
24"x6", 24"x12", 34"x16" / Full-View Aluminum
(34"x16" n/a in end panels on 10', 14', 18', 22' wide doors & 18', 21' sections)
(Full-View Aluminum frame to match size and panel layout of steel section)
(Check Full-View Aluminum door for color, glass, end stile and rail options)

Values are for standard product, contact C.H.I. for options

REV July/2018

Door Mark	Door Width	Door Height	Door Type	Project Name	Prepared By
Door Quantity	Opening Width	Opening Height	Jamb Type	Operation	Date
Quote Number	Panels Wide	Sections High	Color	Door Company	Sheet
Architect				Contractor	



www.chiohd.com | 1485 Sunrise Drive, Arthur, IL 61911
Email: aia@chiohd.com | Phone: (800) 590-0559 | Fax: (800) 738-5066