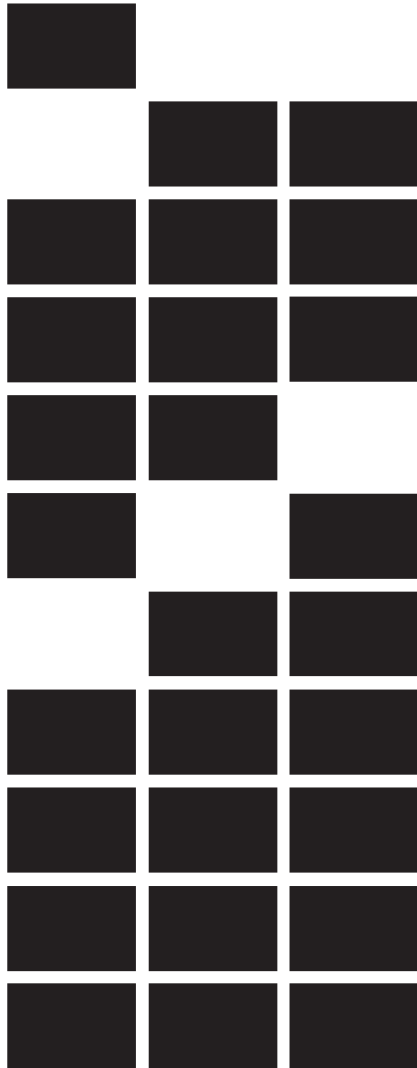


C.H.I.

O V E R H E A D D O O R S

PREVENTIVE MAINTENANCE MANUAL



To insure proper identification of this door please complete the information below.

Door Model: _____

Door Size: _____ x _____

Installed By: _____

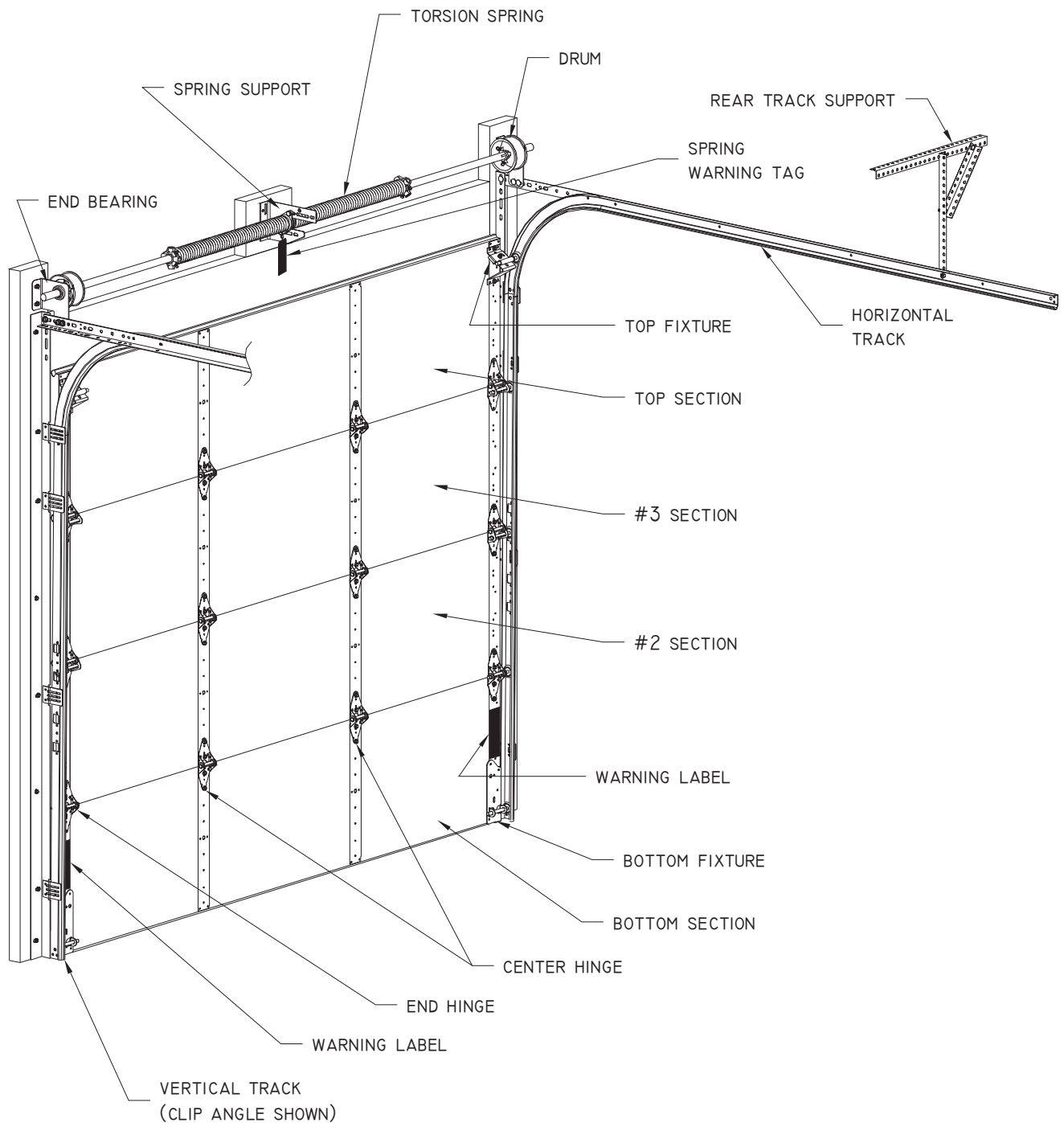
Installation Date: _____

Door Basics




Review all warnings prior to beginning any maintenance program.

Refer all adjustments and repairs to the door professional listed on the back of this manual.

Not all available options are shown below for clarity. Some options shown may not apply to your installation. If you feel the illustration is not adequate call the door professional listed on back of this manual for assistance in identifying basic door components.



Door Maintenance

 WARNING	All spring components (cable drums, lift cables, torsion spring supports, end bearings, and bottom brackets) are under tension and extremely dangerous. Loosening or removing bolts without releasing tension will cause parts to be dangerously projected, resulting in severe injury or death. Refer all adjustments and repairs to the door professional listed in this manual.
 WARNING	Enough space exists at section joints during operation of door to allow fingers to be pinched or caught resulting in severe injury. Never place your fingers in or near section joints while the door is moving.
 WARNING	Garage doors are heavy. Worn torsion or extension springs can break causing the door to fall which may result in property damage, physical injury or death. Keep doorway clear at all times. No person should ever stand directly in path of door in its downward travel or walk through doorway while door is moving.

This door is constructed utilizing high quality materials and workmanship. To insure proper operation, the following maintenance should be performed twice a year.

- ✓ Lubricate all moving parts and coat torsion springs with regular grade machine oil.
- ✓ Check for loose or missing fasteners.
See warning concerning spring components under tension.
- ✓ Check moving parts for signs of wear.
Pay close attention to end bearings, rollers, hinges and lift cables.
- ✓ Check track support system for loose parts.
- ✓ Check ease of door operation (if electrically operated, disconnect operator first).
Note any binding or unusual noises.
- ✓ Check for seal of door against jambs, header and floor.
- ✓ Check that all safety warning labels and tags are in place.

Periodic Cleaning: Use a mild detergent to wash your door; do not use abrasive cleansers. Check for scratches that can be reasonably repaired. If bare metal is exposed, treat with zinc-based primer. Avoid excessive touch-up; post-applied painting will not match original factory finish.

Label Maintenance: Product safety labels should be periodically inspected, cleaned or replaced as necessary to maintain good legibility at a safe viewing distance.

Repainting the Door: Wash surface thoroughly with a solution of trisodium phosphate (commonly called TSP). Buff surface lightly with an extra-fine-grade steel wool. Repair any rust or bare metal areas and coat with a zinc-based primer. Paint with premium-quality oil-base or latex exterior paint. Avoid use of solvents (mineral spirits can be used). Apply paint to small area of door to test for adhesion. If new paint does not chip, crack or bubble, apply to remainder of door. If in doubt about the correct paint system to use, contact a painting professional.

Repainting Window Frames and Decorative Inserts: Remove insert from window. Wash with mild detergent. Buff surface lightly with an extra-fine-grade steel wool. The frames can be repainted with either A) an oil based primer / latex top coat or B) an oil based paint (no primer required).